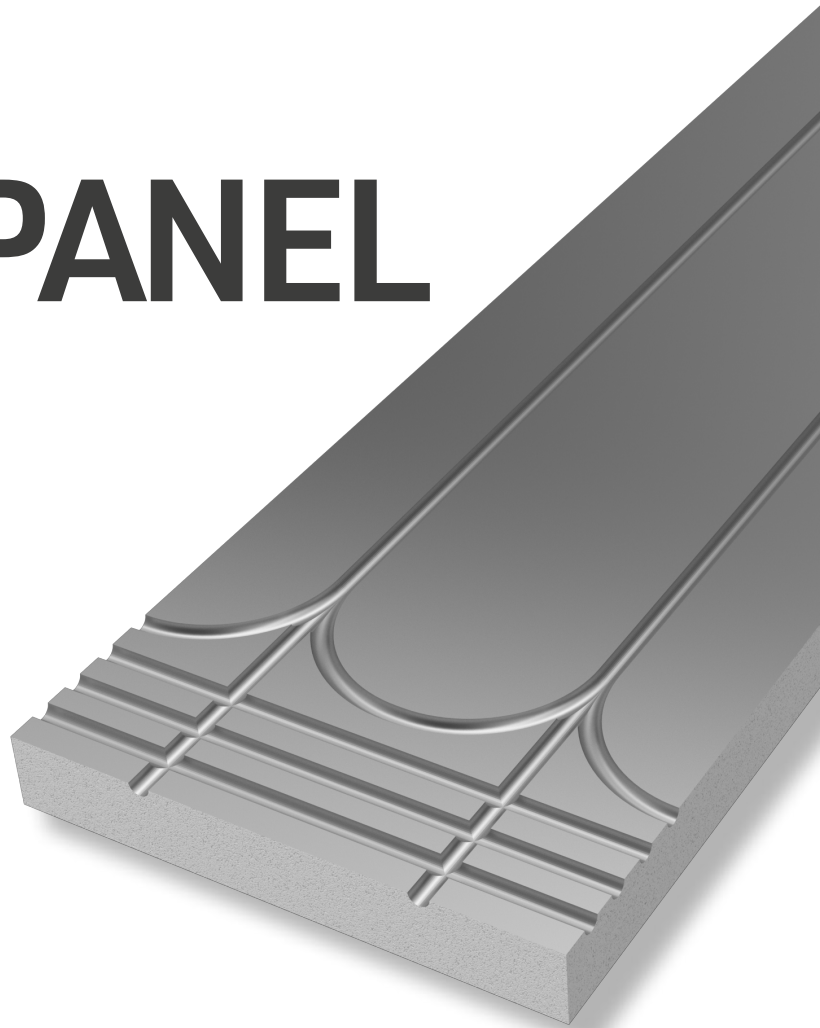


QUICK TO INSTALL | LOW PROFILE SYSTEM | OPTIMUM EFFICIENCY

# IN JOIST BATTEN PANEL

**Fastwarm® Foiled Faced In Joist Batten Panels** provide single product solution designed for easy installation. Fastwarm® Foiled Faced In Joist Batten Panels are 1200mm x 350mm x 50mm, provide an ideal method for fixing between existing joists using battens.



# IN JOIST BATTEN PANEL

## Features & Benefits

- **Convenient Panel Design:** The panels are specifically designed for easy fitting, providing a hassle-free installation process.
- **Efficient Insulation Material:** Made from EPS (Expanded Polystyrene), these panels provide effective thermal insulation, enhancing the energy efficiency of your heating system
- **Optimal Dimensions:** With dimensions of 1200mm x 350mm x 50mm, these panels offer a practical size for various joist and batten configurations.
- **Compatible with 15mm and 16mm Pipe:** These panels are suitable for use with 15mm and 16mm pipes, ensuring compatibility with common pipe sizes.
- **Fastwarm® Foiled Faced In Joist Batten Panels** eliminate the need for separate spreader plates and insulation, simplifying the installation process and reducing overall costs.

Physical Properties	Unit
Dimension (Length x Width x Depth)	1200mm x 350mm x 50mm
Pipe Spacing	200mm
Pipe Suitability	15mm to 16mm
Panel Construction	EPS 100 + foil covering
Foil Covering (Micron)	45
Thermal Conductivity	0.036
Compressive Strength (kPa)	100
Water Vapour Resistivity (MN.s.g-1 m-1)	150-350
Fire Classification	Euroclass E
Water Absorption	<=10%
Nominal Density (kg/m3)	20
Green Guide Rating	A+